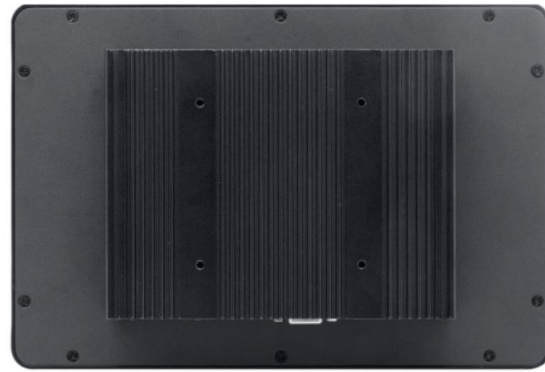


TDD-OFTM-BF101W

10.1" Bezel-free (Rear Mount) Open Frame PCAP Touch Monitors



Overview

The **TDD Touch Monitors** include **Standard, Industrial (Open Frame Bezel-free | Rear Mount, Panel Mount, Closed Frame), Outdoor, Waterproof, Stainless Steel, Marine, Curved, Desktop POS, Commercial Displays, Medical** and **Custom** types, delivers an industrial, reliable and cost-effective solution with outstanding image clarity & accurate touch response for OEMs & systems integrators. 7-98" sizes with rugged bezel, flat structure, high durability and versatility for Kiosks applications from Self-service, Automated Parking, Industrial Automation, Outdoor Control, Healthcare to Gaming.

Features

- Touch thru glass enabled with PCAP supports thickness up to 5mm
- Embedded design with **Steel Frame & Light Aluminum Back**
- IP65 (front) for water and dust protection, flexible mounting in any table, kiosk, or cabinet design

Specifications

Panel

| | |
|-----------------------|---|
| Diagonal Size | 10.1"(16:10), 25.65cm, Active matrix TFT LCD (LED) |
| Active Area (mm) | 216.96 mm x 135.6 mm |
| Resolution | 1280 x 800 |
| Viewing Angle | Horizontal: 80° or 160° total / Vertical: 80° or 160° total |
| Number of Colors | 16.7 million |
| Brightness (typical) | 250 nits |
| Response Time-total | 35 (Typ.)(Tr+Td) ms |
| Contrast Ratio | 1000:1 |
| Input Video Frequency | Horizontal: 30 - 60 KHz / Vertical: 50 - 75 Hz |

Touch

| | |
|-------------------|--|
| Touch Technology | PCAP (Projected Capacitive) - 10 Touch Capacity |
| Surface Treatment | Water, Dust & Vandal proof; Optional: Anti-glare, Anti-fingerprint, Anti-smudge, Anti-bacterial |
| Supported OS | Windows / Android / Linux / Mac |

Interfaces / Connectors / Controls

| | |
|-----------------------|---|
| Video Interfaces | VGA x1 / HDMI x1 / DVI x1 (opt.) / Display Port x1 (opt.) / USB x1 for Touch; HDCP: Yes |
| Connectors & Controls | Audio Mini jack x1 / DC x1; 5 OSD buttons |

Power

Supply / Consumption: 100-240 VAC / 12VDC +/- 5%; 10W typical, 1.2W sleep, 0.5W off

Mechanical

Product Dimensions: 260 x 175 x 42mm / Weight (Unpacked / Packed): 1.6 / 2.3 kg (1pcs)
Box Dimensions: 310 x 298 x 70mm (1pcs) / VESA Mounting: 75 x 75 / 100 x 100mm

Environmental

Operating / Storage Temperature: -10°C to 50°C / -20°C to 60°C

Accessories

Power adapter / cable, HDMI / VGA / Touch USB cable, flush mount brackets w/screws (opt.)

Others

MTBF / Warranty / Enclosure Color: 50,000 hours demonstrated / 1-year / black | silver
Ready for Use: 24/7

* TDD (www.tddtouch.com, sales@tddtouch.com) reserves the right to change specifications without prior notice.